



GARDNER-WEBB UNIVERSITY  
SCHOOL of EDUCATION

GRADUATE AND DEGREE  
COMPLETION PROGRAMS

The Gardner-Webb University School of Education consists of people dedicated to demonstrating innovation, creativity, teamwork, problem solving skills, flexibility, adaptability, and a commitment to continuous learning. Our coursework is offered in a module format, blending varied topics into unified courses to draw intentional connections within the curriculum material. This integrated approach to learning reinforces our mission to empower individuals to make a positive impact in their professional field.

## **WE VALUE**

Principles of ongoing reflection, continuous improvement, and data-informed decision-making.

Caring relationships characterized by high ethical standards and collaboration.

Leadership skills focused on social and emotional intelligence, understanding group dynamics within diverse communities, and a vision for meaningful change.

Interactive Learning environments utilizing innovation and the appropriate tools and strategies to expand opportunities.



GARDNER-WEBB UNIVERSITY  
SCHOOL of EDUCATION



GARDNER-WEBB UNIVERSITY  
SCHOOL of EDUCATION

TOTAL GRADUATES

5,523

1,451

UNDERGRADUATE  
DEGREES

4,072

GRADUATE  
DEGREES





# EdD in Curriculum and Instruction

The EdD in Curriculum and Instruction serves advanced candidates aspiring to leadership roles that promote high impact learning by empowering people within communities to nourish innovation through facilitated collaboration and continuous improvement.

## CURRICULUM TOPICS

- Theory Development
- Issues and Models of Curriculum Evaluation
- Research Design and Methods
- Reform and Change
- Assessment and Evaluation
- Instructional Leadership
- EOCI Dissertation Coaching/Clinical Experience Seminar
- EDCI Dissertation

## FAQS

- The program is offered in a blended format (online and select weekends) and a low-residency blended format (online and fewer select weekends).
- The program includes a dissertation, customized internship, and electronic portfolio.
- Upon completion of the program, students will be subject to state licensure requirements leading to advanced licensure.



## ADMISSION REQUIREMENTS

- Completed application and fee
- Official graduate-level transcripts showing a master's degree from a regionally-accredited institution
- Minimum 3.0 GPA for all graduate coursework
- Official test score on the MAT or GRE from within the past five years
- Minimum of three years teaching experience preferred
- Five professional and/or academic references
- State-issued teaching license preferred

*Contact admissions for a complete list of requirements.*

# EdD in Educational Leadership

The EdD in Educational Leadership equips candidates with knowledge, skills, attitudes, values, and beliefs that will enable them to function effectively in leadership roles within the dynamic environment of schools.

## CURRICULUM TOPICS

- Theory Development
- Operations and Management
- Research Design and Methods
- Reform and Change
- Organizational Behavior
- Instruction
- Seminar/Internship
- Dissertation

## FAQS

- The program is offered in a blended format (online and select weekends) and a low-residency blended format (online and fewer select weekends).
- The program includes a dissertation, customized internship, and electronic portfolio.
- Upon completion of the program, students will be subject to state licensure requirements in order to receive Superintendent Licensure.

## ADMISSION REQUIREMENTS

- Completed application and fee
- Official graduate-level transcripts showing a master's degree from a regionally-accredited institution
- Minimum 3.0 GPA for all graduate coursework
- Official test score on the MAT or GRE from within the past five years
- Minimum of three years administration experience preferred
- Five professional and/or academic references
- State-issued school administrator license

*Contact admissions for a complete list of requirements.*





# EdD in Organizational Leadership

The EdD in Organizational Leadership empowers candidates and communities through innovative, collaborative leadership by applying principles of continuous improvement to expand human potential.

## CURRICULUM TOPICS

- Organizational Behavior and Theory
- Leadership Theory and Practice
- Ethics, Ideology, and Personal Leadership
- Strategic Leadership and Management of Global Change
- Action Research, Program Evaluation, Data Analysis and Interpretation, and Qualitative Methods
- E-Learning
- Policy Development and Business Law
- Innovation and Transformation
- Contemporary Topics

## FAQS

- The program is offered in a blended format (online and select weekends).
- The program includes a customized internship and a consultancy project as the culmination of the degree.
- Cohorts within the program are diverse, with students from a wide range of professional fields.

## ADMISSION REQUIREMENTS

- Completed application and fee
- Official graduate-level transcripts showing a master's degree from a regionally-accredited institution
- Minimum 3.0 GPA for all graduate coursework
- Official test score on the MAT or GRE from within the past five years
- Minimum of three years experience in the applicant's profession
- Three professional and/or academic references

*Contact admissions for a complete list of requirements.*



# EdS in Executive Leadership

The EdS in Executive leadership prepares candidates to respond to the ever-changing economic, political, social, and technological environments present in today's schools.

## CURRICULUM TOPICS

- Executive Leadership at the District Level
- Fiscal Management and Leadership
- Research Methods and Program Evaluation
- Policy Analysis in Executive Leadership
- Leading Change for Educational Transformation
- Organization Communications and Technology
- Executive Leadership Internship

## FAQS

- The program is offered in a fully online, synchronous format.
- The program includes a customized internship and electronic portfolio.
- Upon completion of the program, students will be subject to state licensure requirements in order to receive Superintendent Licensure.
- A bridge to an EdD in Educational Leadership is possible.



## ADMISSION REQUIREMENTS

- Completed application and fee
- Official graduate-level transcripts showing a master's degree from a regionally-accredited institution
- Minimum 3.0 GPA for all graduate coursework
- Official test score on the MAT or GRE from within the past five years
- Minimum of three years administration experience preferred
- Five professional and/or academic references
- State-issued school administrator license

*Contact admissions for a complete list of requirements.*



# MA in Curriculum and Instruction

The MA in Curriculum and Instruction focuses on theoretical foundations of practice and allows students to probe current research, explore professional literature, deepen content knowledge, forge new professional connections, and create new ways of thinking and doing.

## CURRICULUM TOPICS

- Philosophy, History, and Methodology of Curriculum and Instruction (depending on student's choice of program)
- Teaching Strategies for Diverse Populations
- Measurement, Assessment, and Action Research for Teacher Leaders
- Current Issues and Special Topics for Teacher Leaders
- Teaching Literacy in the Age of Accountability
- Internship Seminar

## FAQS

- The program is offered in a fully online, asynchronous format as well as face-to-face.
- Students may choose a traditional K-12 Curriculum and Instruction program or a concentration in Academically/Intellectually Gifted Education, Teacher Leadership, Christian School Education, Elementary Grades Education, Middle Grades Education, Rural Education, or Urban Education.
- The program includes a customized internship and electronic portfolio.
- Upon completion of the program, students will be subject to state licensure requirements in order to receive licensure in Curriculum and Instruction.



## ADMISSION REQUIREMENTS

- Completed application and fee
- Official transcripts showing a bachelor's degree from a regionally-accredited institution
- Minimum 2.5 GPA for all coursework
- Test score from an approved standardized test
- Minimum of three years experience preferred
- Three professional and/or academic references
- State-issued educator's license (required in order to be considered for graduate-level licensure)

*Contact admissions for a complete list of requirements.*



# MA in Instructional Technology

(Beginning January 2017 pending SACSCOC approval.)

The MA in Instructional Technology prepares students to understand, analyze, and evaluate how online resources can be utilized and integrated within the classroom for successful student learning.

## CURRICULUM TOPICS

- The Web of Everything: Student Safety Online, Social Networking, Societal Impact, and Current Trends
- HyperMedia: The Art of Effective Integration
- Innovative Learning: Physical and Virtual
- P3: Policies, Practices, and Professionalism in a Technology Infused Society
- Transformational Technology and Strategic Leadership for the World of Tomorrow
- Internship

## FAQS

- The program is offered in a fully online, synchronous format.
- The program includes an internship with real-life technology exposure and working experience.
- Upon completion of the program, educators will qualify for NCDPI 077 – Instructional Technology Specialist Computer Licensure. The state of North Carolina offers reciprocity to several states.
- Educators with an A-level NC license who complete the first three semesters of the program will qualify for a Special Endorsement in Computer Education 079.



## ADMISSION REQUIREMENTS

- Completed application and fee
- Official transcripts showing a bachelor's degree from a regionally-accredited institution
- Minimum 2.5 GPA for all coursework
- Official test score from the MAT or GRE within the past five years
- Minimum of three years experience preferred
- Three professional and/or academic references
- State-issued educator's license

Contact admissions for a complete list of requirements.

# MA in Executive Leadership

The MA in Executive Leadership prepares experienced teachers to serve as educational leaders in both theory and practice, working to provide a foundation in the principles and procedures of educational administration, curriculum development, and instructional improvement. The curriculum is focused to promote the ability to implement and evaluate models of instruction and methods of supervision in the classroom and other school settings, foster the ability to evaluate classroom teachers within an academic environment, and develop the capacity to interpret and implement educational research in the total school program.

## CURRICULUM TOPICS

- Executive Leadership in a 21st-Century Change Environment
- Research and Assessment for 21st-Century Executive Leaders
- Resource Management for 21st-Century Executive Leaders
- 21st-Century Curriculum and Instructional Development
- 21st-Century School Leadership
- Executive Leadership Internship

## FAQS

- The program is offered in a fully online, asynchronous format.
- The program includes a customized internship and electronic portfolio.
- Upon completion of the program, students will be subject to state licensure requirements in order to receive licensure as a School Administrator.



## ADMISSION REQUIREMENTS

- Completed application and fee
- Official transcripts showing a bachelor's degree from a regionally-accredited institution
- Minimum 2.5 GPA for all coursework
- Test score from an approved standardized test
- Minimum of three years teaching experience as recognized by the applicant's state Department of Education (required by time of program completion)
- Three professional and/or academic references
- State-issued educator's license

*Contact admissions for a complete list of requirements.*



# School Administration Add-on Licensure

The School Administration Add-on Licensure prepares experienced teachers who already hold a master's degree in Education to serve as educational leaders in both theory and practice. The curriculum goals directly mirror those of the MA in Executive Leadership.

## CURRICULUM TOPICS

- Executive Leadership in a 21st-Century Change Environment
- Resource Management for 21st-Century Executive Leaders
- 21st-Century School Leadership
- Executive Leadership Internship

## FAQS

- The program is offered face-to-face and in a fully online, asynchronous format.
- The program includes a customized internship and electronic portfolio.
- Upon completion of the program, students will be subject to state licensure requirements in order to receive licensure as a School Administrator.
- The Add-on Licensure track is a reduced curriculum from the full MA in Executive Leadership program.



## ADMISSION REQUIREMENTS

- Completed application and fee
- Official transcripts showing a master's degree from a regionally-accredited institution
- Minimum 2.5 GPA for all graduate coursework
- Prerequisite coursework in research methods, measurement and assessment, curriculum development, and strategies of teaching
- Three professional and/or academic references
- State-issued educator's license

*Contact admissions for a complete list of requirements.*

# BS in Elementary Education, Degree Completion Program

The fully online BS in Elementary Education program offers candidates the flexible and convenient opportunity to learn about stages of development children experience from ages five through 12. Through studying characteristics of students from various cultural backgrounds and exploring the unique needs of exceptional students, candidates will acquire useful techniques and strategies for the classroom and develop strong skills in communication and personal relationships.

## CURRICULUM TOPICS

- Diverse Populations in 21st-Century Schools
- Educational Psychology
- Facilitating Learning in 21st-Century Schools
- Fine Arts Integration
- Healthful Living for Elementary Educators
- Introduction to Integration and Assessment
- Literacy and Language Arts
- Literacy Foundations
- Math Content for Elementary Educators
- Math Methods
- Practicum in Literacy
- Science Methods
- Social Studies Methods
- Student Teaching
- Teaching in 21st-Century Schools

## FAQS

- The program is offered in a fully online, synchronous and asynchronous format.
- Classes include weekly virtual meetings for more direct interaction with professors.
- Coursework is versatile and accommodates a wide range of learning styles.
- A School of Education advisor is assigned to each student to aid in academic and career decisions throughout the duration of the program.
- Program coursework can be completed in as little as five semesters, depending on the number of hours a student may transfer in to the University.
- The Traditional Undergraduate Program also offers degrees in elementary and middle grades education.
- Clinical experiences begin in the first education course and culminate with a semester-long student teaching experience.



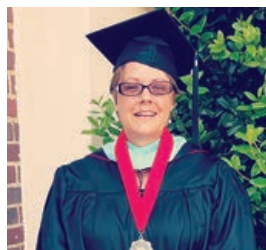
## ADMISSION REQUIREMENTS

- Completed application
- Official transcripts
- An Associate of Arts Degree in Liberal/General Studies, an Associate of Science, Bachelor of Arts, or Bachelor of Science degree from a regionally-accredited institution (applicants may also choose to meet the Degree Completion Program general education requirements of Gardner-Webb University by transferring a minimum of 44 hours from an accredited institution)

Contact admissions for a complete list of requirements.



# Jessica Stump ('16)



While completing her Master of Arts in Curriculum and Instruction at Gardner-Webb University, Jessica Stump ('16) of King, N.C., expected to benefit intellectually; however, she

didn't anticipate how her studies would affect her personally.

"I have loved, loved, loved being back in the role of learner," she observed. "In the field of education, we tend to distinguish teachers from students/learners. I have come to know that our work is more effective as the lines between teacher and learner become blurred. I cannot begin to understand the process of meaningful insight, unless I am living it myself."

Because her classes were entirely online, she also didn't think she would have opportunities to get to know her fellow students. "I have been able to form special relationships that will last long after our work ends," she assessed. "Our group work has forced us to get to know one another in unique ways. We are spread across the state, are in various stages of our careers, work in many areas of education, and have differing learning habits."

The topics covered in her online classes were immediately beneficial to her on the job. "I've felt each class was specifically designed with me in mind," she revealed. "As a result of this study, my work is more purposeful now."

"I valued the relationships I developed with the faculty and other students. It was the best learning experience of my life. My classes were challenging, relevant, and mirrored the experiences I have daily in my job."

– Brian Sherman, EdD  
*Educational Leadership*



# School of Education Publications



JOEL is a free, online, double-blind, peer-reviewed journal published by the School of Education. The journal provides organizational and educational leaders access to scholarly articles, research, book reviews, and opinion pieces. The publication is by and for practitioners and emerging scholars, and is currently published twice each year with rolling content submissions.

[gardner-webb.edu/joel](http://gardner-webb.edu/joel)



Instructional Modules for Professional learning Responding to Opportunities and Valuing Educators (IMPROVE) is a peer-reviewed virtual professional development resource. Modules within the resource are collaboratively authored by candidates in their final semester of coursework in the EdD in Curriculum and Instruction at Gardner-Webb University and promote positive, data-informed, sustainable change in instructional practices or organizational structures to improve student learning at the K-12 level and beyond.

[gardner-webb.edu/improve](http://gardner-webb.edu/improve)

Let us partner with you to join our community of individuals dedicated to demonstrating innovation, creativity, teamwork, problem solving, flexibility, adaptability, and a commitment to continuous learning.

Working alongside our enrollment officers and success coaches, you will be guided through every step of the enrollment process, including applications, testing, financial aid, class scheduling, and everything between now and your graduation date.

**Begin your journey with the School of Education at Gardner-Webb University today!**

***GARDNER-WEBB.EDU/SOE***







GARDNER-WEBB UNIVERSITY  
SCHOOL of EDUCATION

Upon request, this publication can be made available in an alternate format. Please make a request by calling 704-406-4723 or emailing [gradschool@gardner-webb.edu](mailto:gradschool@gardner-webb.edu).